

CORRESPONDENCE

A replacement name for *Chrysolina mikhailovi* Lopatin, 2011 (Coleoptera: Chrysomelidae: Chrysomelinae), primary junior homonym of *Ch. mikhailovi* Ge & Daccordi, 2011

Xiaolong Wang^{1,2}, Siqin Ge^{2*}, Shaoqin Li^{1*}

¹Department of Hubei Insect Resources Utilization and Sustainable Pest Management Key Laboratory, College of Plant Science and Technology, Huazhong Agricultural University, Wuhan 430072, China

²Key Laboratory of Zoological Systematics and Evolution, Institute of Zoology, Chinese Academy of Sciences, Beijing 100101, China

*Corresponding author, E-mail: lishaoqin@163.com, gesq@ioz.ac.cn

Abstract A replacement name is provided for *Chrysolina mikhailovi* Lopatin, 2011, a primary junior homonym of *Ch. mikhailovi* Ge & Daccordi, 2011, namely *Ch. yurimikhailovi* **nomen novum**. Habitus and aedeagus of *Ch. mikhailovi* Ge & Daccordi, 2011, and aedeagus of *Ch. yurimikhailovi* **nom. nov.** are provided.

Key words Coleoptera, Chrysomeloidea, Chrysomelidae, *Chrysolina*, homonym.

Chrysolina Motschulsky, 1860 is the largest genus in the leaf beetle subfamily Chrysomelinae. It is distributed in Asia, Europe, Africa, North America, and introduced in South America and Australia (Bienkowski, 2007).

In October 2011, Lopatin described a new species from Sichuan, China under the genus and named as *Chrysolina mikhailovi* Lopatin, 2011. But it is a primary junior homonym of the species *Chrysolina mikhailovi* Ge & Daccordi, 2011, which was described by Daccordi *et al.* in February 2011. It is clear by the original descriptions that they are two different species. Therefore, *Chrysolina yurimikhailovi* **nomen novum** is proposed here, as a replacement name for *Chrysolina mikhailovi* Lopatin, 2011.

***Chrysolina mikhailovi* Ge & Daccordi, 2011** (Fig. 1)

Chrysolina mikhailovi Ge & Daccordi in Daccordi *et al.*, 2011: 308, figs 8, 55–59, 77; Yang *et al.*, 2014: 537, fig. 366; Yang *et al.*, 2015: 83.

Distribution. China (Tibet).

***Chrysolina yurimikhailovi* Wang & Ge, nom. nov.** (Fig. 2)

Chrysolina mikhailovi Lopatin, 2011: 858, figs 13–14; Yang *et al.*, 2015: 83.

Distribution. China (Sichuan).

Remarks. This species is different from *Chrysolina mikhailovi* Ge & Daccordi, 2011 in the following characters: body shape wide-oval rather than elongate-ovoid in latter; punctures of head larger than latter; depression of pronotum deeper; elytra weakly and almost rectilinearly widened from humeral angles to beginning of apical declivity, then roundly narrowed toward apical angles of elytra, while sides of elytra almost paralleled in latter; aedeagus enlarged apically and flagellum slender, while latter species with basal part as wide as apex, and flagellum bifid, very wide.

Additionally, both the species and *Ch. mikhailovi* Ge & Daccordi, 2011 were cited by Yang *et al.* (2015, in the same page), however, they did not provide an appropriate treatment.

urn:lsid:zoobank.org:pub:860E29B8-68BE-453B-B470-D5EBDD7CBB49

Received 10 December 2019, accepted 16 January 2020

Executive editor: Fuqiang Chen

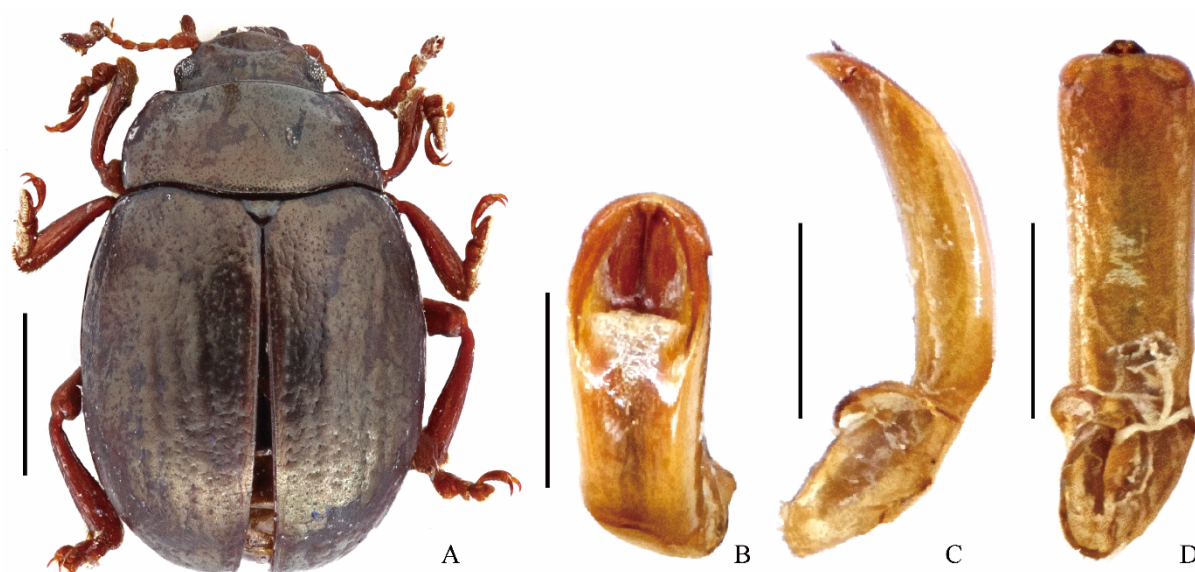


Figure 1. Holotype of *Chrysolina mikhailovi* Ge & Daccordi, 2011. A. Habitus; B–D. Aedeagus. Scale bars: A = 2.0 mm; B–D = 1.0 mm.

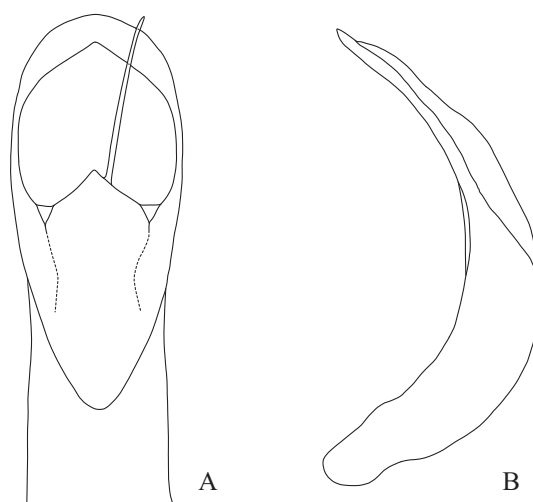


Figure 2. Aedeagus of *Chrysolina yurimikhailovi* Wang & Ge, **nom. nov.** A. Dorsal view. B. Lateral view. (redrawn follow Lopatin, 2011)

Funding This study was supported by the National Natural Science Foundation of China (31472028).

Acknowledgements The authors are grateful to Meiyang Lin and Zhengzhong Huang for the advice on the paper writing.

Reference

- Bienkowski, A.O. 2007. *A Monograph of the Genus Chrysolina Motschulsky, 1860 (Coleoptera: Chrysomelidae) of the World, Part 1*. Techpolygraphcentre Publ, Moscow. 417pp.
- Daccordi, M., Ge, S.Q., Cui, J.Z., Yang, X.K. 2011. New species of *Chrysolina* Motschulsky, 1860 from Southwest China (Coleoptera, Chrysomelidae, Chrysomelinae). *Nouvelle Revue d'Entomologie (NS)*, 26(4): 291–316.
- Lopatin, I.K. 2011. New species of the leaf-beetles (Coleoptera, Chrysomelidae) from China, X. *Entomologicheskoe Obozrenie*, 90(2): 375–387.
- Yang, X.K., Ge, S.Q., Wang, S.Y., Li, W.Z., Cui, J.Z. 2014. *Fauna Sinica: Insecta, Volume 61: Coleoptera: Chrysomelidae: Chrysomelinae*. Science Press, Beijing. 308pp.
- Yang, X.K., Ge, S.Q., Nie, R.E., Ruan, Y.Y., Li, W.Z. 2015. *Chinese Leaf Beetle*. Science Press, Beijing. 507pp.