

ORIGINAL ARTICLE

A survey of the tribe Mesosini Mulsant (Coleoptera: Cerambycidae) from Beijing, China

Jian Sun¹, Siqin Ge^{2*}, Nengwen Xiao³, Meiyong Lin^{1, 2*}

¹Engineering Research Center for Forest and Grassland Disaster Prevention and Reduction, Mianyang Normal University, Mianyang 621000, China

²Key Laboratory of Zoological Systematics and Evolution, Institute of Zoology, Chinese Academy of Sciences, Beijing 100101, China

³State Environmental Protection Key Laboratory of Regional Eco-process and Function Assessment, Chinese Research Academy of Environmental Sciences, Beijing 100012, China

*Corresponding authors, E-mails: gesq@ioz.ac.cn; linmeiyong2021@126.com

Abstract Four species of the tribe Mesosini Mulsant, 1839 are recorded from Beijing, the capital of the People's Republic of China: *Agelasta (Mesolophus) marmorata* (Pic, 1927), *Mesosa (Perimesosa) atrostigma* Gressitt, 1942, *M. (P.) hyunchaei* Yamasako & Hasegawa, 2009, and *M. (Mesosa) myops* (Dalman, 1817). *M. (P.) hyunchaei* Yamasako & Hasegawa, 2009 is recorded from China for the first time, including Beijing and Jiangsu.

Key words Longhorn beetles, Lamiinae, biodiversity surveys, new record.

Two species of Mesosini Mulsant, 1839 have been previously recorded from Beijing, *Mesosa (Mesosa) myops* (Dalman, 1817) and *M. (M.) stictica* Blanchard, 1871. However, the record are confused in history, while Gressitt (1951), Chiang *et al.* (1985) and Yu (2020) only recorded the former species, Löbl & Smetana (2010) only recorded the latter, and Hua (2002), Lin (2017), Lin & Tavakilian (2019) and Danilevsky (2020) recorded both.

In this paper, we newly report *Agelasta (Mesolophus) marmorata* (Pic, 1927), *Mesosa (Perimesosa) atrostigma* Gressitt, 1942, and *M. (P.) hyunchaei* Yamasako & Hasegawa, 2009 from Beijing, of which, the latter species is also a new record for China. And we believe that basing on further biodiversity surveys, there will be more species of the tribe Mesosini been discovered from Beijing, for example, *Falsomesosella truncatipennis* Pic, 1944 might distribute in Beijing (Lin *et al.*, 2021).

Specimens studied are deposited in the following institutions, museums or private collections:

BJFU—Beijing Forestry University, Beijing, China;

CJC—Private collection of Chen Jin, Beijing, China;

CSHL—Private collection of Hongliang Shi, Beijing, China;

CSJ—Private collection of Jian Sun, Beijing, China;

CYXR—Private collection of Xiaoran Yang, Beijing, China;

CZDK—Private collection of Dakang Zhou, Beijing, China;

CZWW—Private collection of Weiwei Zhang, Chongqing, China;

IZCAS—Institute of Zoology, Chinese Academy of Sciences, Beijing, China;

JLNP—Jilin Northern of Creature Specimen Plant, Jilin, China;

MNHN—Muséum National d'Histoire Naturelle, Paris, France;

MYNU—Invertebrate Collection of Mianyang Normal University, Mianyang, Sichuan, China;

NHRS—Naturhistoriska Riksmuseet, Stockholm, Sweden;

NSMT—National Science Museum (Natural History) = National Museum of Nature and Science, Tokyo, Japan;

SYSU—Sun Yat-Sen University, Guangzhou, Guangdong, China.

Received 9 May 2022, accepted 20 September 2022

Executive editor: Fuqiang Chen

Abbreviations used: TD—Type depository and TL—Type locality.

***Agelasta (Mesolophus) marmorata* (Pic, 1927)** (Figs 1–2)

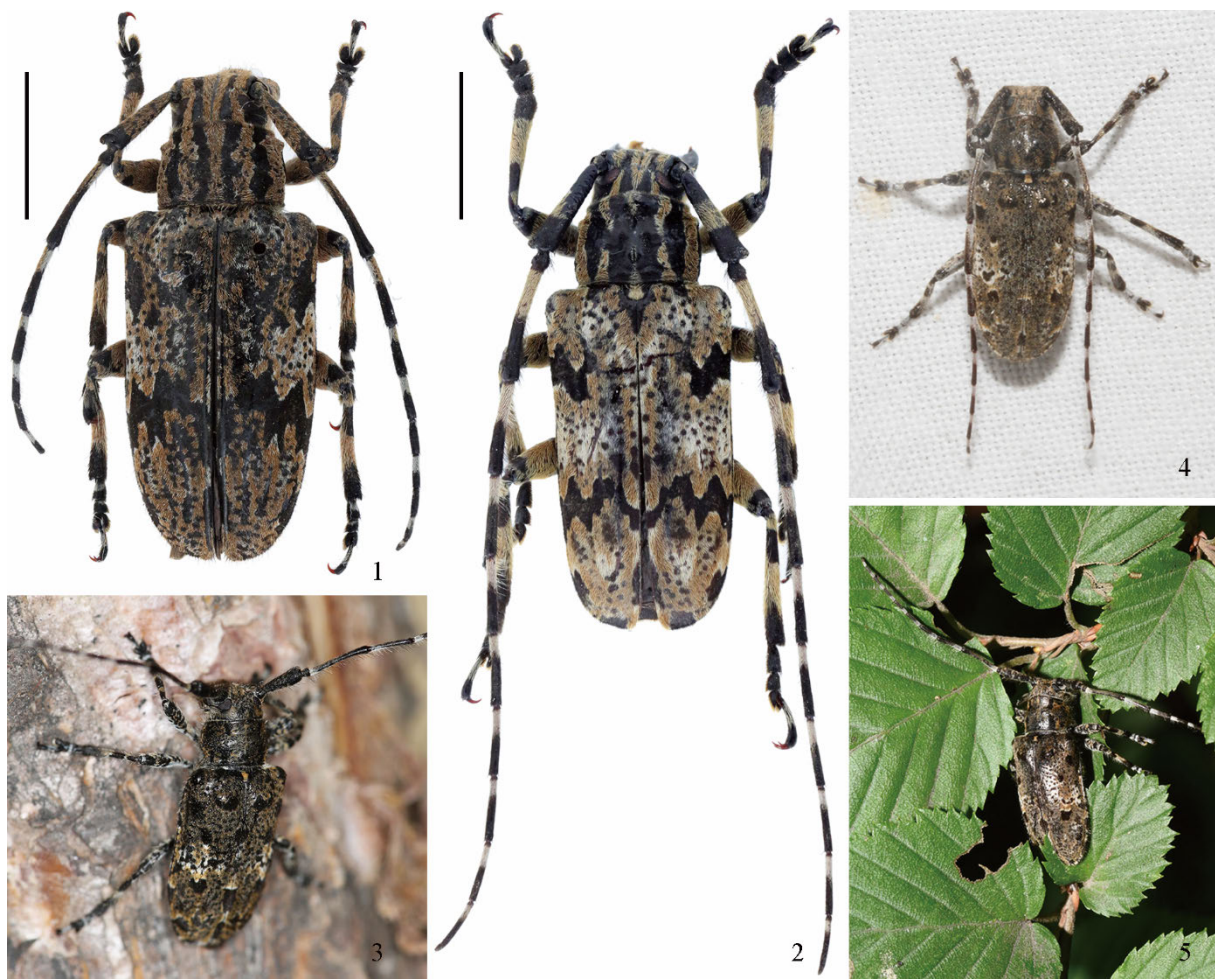
Samiomimus marmoratus Pic, 1927: 36. TL: Vietnam. TD: MNHN.

Agelasta (Mesolophus) marmorata: Breuning, 1939: 490.

Material examined. Beijing: 1♀ (Fig. 1), Huairou, Xiangshuihu, VI-2019, leg. Zhaonan Li (IZCAS). Fujian: 1♀, Fuzhou, Kuiqi, V-1952, leg. Xuecheng Chen (IZCAS). Yunnan: 1♂, Huaping, VI-1955 (IZCAS); 1♀, Kunming, Heilongtan Caodi, 31-VII-1975 (IZCAS); 1♂ (Fig. 2), Longling, Xiaoheishan Shengjiziranbaohuqu, Guchengshan Guanhuizhan, elev. 2122 m, 98°45'44.59"E, 24°50'20.70"N, 2-X-2019, leg. Meiyang Lin (IZCAS).

Distribution. China (Beijing (new record), Fujian, Sichuan, Yunnan (new record)), India, Vietnam.

Remarks. Breuning (1939) firstly recorded the distribution of *A. marmorata* from China (Sichuan: Batang). Hua (2002) added the distribution of Fujian. This species is newly reported from Beijing and Yunnan.



Figures 1–5. *Agelasta (Mesolophus) marmorata* (Pic, 1927) and *Mesosa (Perimesosa) atrostigma* Gressitt, 1942. 1–2. *A. marmorata* (1. Female, from Beijing, Huairou; 2. Male, from Yunnan). 3–5. *M. atrostigma* (3. Female, from Beijing, Miyun, photographed by Shengping Yu; 4. Male, from Beijing, Huairou, photographed by Guoyue Yu; 5. Male, from Beijing, Fangshan, photographed by Guoyue Yu). Scale bars: 1–2=5.0 mm.

***Mesosa (Perimesosa) atrostigma* Gressitt, 1942** (Figs 3–5)

Mesosa atrostigma Gressitt, 1942: 84, pl. I, fig. 4. TL: China (Zhejiang). TD: IZCAS.

Mesosa (Perimesosa) atrostigma: Gressitt, 1951: 420.

Material examined. Beijing: 1♂, Huairou, Huangtuliang, 28-VIII-2019 (Fig. 4, on leaves of *Carpinus turczaninowii*); 1♂, Fangshan, Puwacun, 31-VII-2020 (Fig. 5, by light trap); 1♀, Miyun, Wulingshanlinchang, 12-VIII-2015, leg. Shengping

Yu (IZCAS, Fig. 3). Henan: 1♀, Xixia, Taiping, 18-VII-1998, leg. Yongshan Shi (IZCAS). Hubei: 1♂, Baokang, VI-1981 (IZCAS).

Distribution. China (Beijing (new record), Henan (new record), Shaanxi, Anhui, Zhejiang, Hubei (new record), Fujian, Taiwan, Guangxi).

Remarks. The type locality of *M. atrostigma* is Hangzhou, Zhejiang. Hua (2002) recorded this species from Zhejiang, Fujian, Taiwan and Guangxi. Lin (2014, 2017) added Anhui and Shaanxi to the distribution, respectively. In this paper, we recorded it from Beijing for the first time, based on several pictures taken from Fangshan, Huairou and Miyun Districts and one female specimen from Miyun District. It is reported from Henan and Hubei Provinces based on specimens deposited in IZCAS.

***Mesosa (Perimesosa) hyunchaei* Yamasako & Hasegawa, 2009** (Figs 6–9)

Mesosa (Perimesosa) hyunchaei Yamasako & Hasegawa, 2009: 290, figs 1a–e, 2a–b. TL: S. Korea. TD: NSMT.

Material examined. Beijing: 1♂, Haidian, Yangtaishan, 21-VII-2020, leg. Xiaoran Yang (CYXR); 1♀, Haidian, Dajuesihoushan, 10-VIII-2020, leg. Xiaoran Yang (MYNU from CYXR); 1♀ (Fig. 9), Mentougou, Liyuanling, 11-VII-1997, leg. Baowen Sun (IZCAS); 1♂ (Figs 6–7), Huairou, Fenshuiling, elev. 600 m, 31-VII-2020, leg. Jian Sun, by light trap (CSJ); 1♀, Huairou, Fenshuiling, elev. 538 m, 3-VIII-2022, leg. Jian Sun, by light trap (CSJ); 1♂, Beijing, before 1990, leg. Weiwei Zhang (CZWW). Jiangsu: 1♂ (Fig. 8), Jurong, Baohuashan, 9-VII-2014, leg. Jianyue Qiu (MYNU).

Distribution. China (Beijing, Jiangsu), S. Korea.

Host plant. *Celtis* sp. (Ulmaceae) (Yamasako & Hasegawa, 2009).

Remarks. This species was previously known only from S. Korea (Yamasako & Hasegawa, 2009). It is recorded from China for the first time (Beijing and Jiangsu), indicating that it has wider distribution.

Yamasako & Hasegawa (2009) compared this species with *M. (P.) hirsuta* distributed in Japan, Korea and Russian Far East. According to our study, it is also quite similar to *M. (P.) atrostigma* Gressitt, 1942 by the elytral maculae, especially the middle part. However, it can be easily distinguished from each other by: a) presence (*atrostigma*) or absence (*hyunchaei*) of four black maculae on pronotum; b) absence (*atrostigma*) or presence (*hyunchaei*) of light color pubescent markings at basal part of elytra, around humeri.

***Mesosa (Mesosa) myops* (Dalman, 1817)** (Figs 10–15)

Lamia myops Dalman, 1817: 168. TL: Finland. TD: NHRS.

Mesosa myops: Küster, 1851: 98.

Mesosa (Mesosa) myops: Breuning, 1939: 401.

Mesosa myops plotina Wang, 2003: 323, 396, figs in p. 323. TL: China: Jilin. TD: JLNP. Synonymized by Danilevsky, 2010: 46.

Material examined. Beijing: 1♂, Chaoyang, Tucheng, 30-IV-1985, leg. Weiwei Zhang (CZWW); 6♂6♀, Chaoyang, Sunhexiang, 8/26-VI-2020, leg. Meiyong Lin (IZCAS); 5♀5♂, Chaoyang, Sunhexiang, host: *Styphnolobium japonicum*, 19-IV-2020, leg. Yong Wang & Meiyong Lin (IZCAS); 4♂4♀, Haidian, Zhongguancun, 1958-1993 (IZCAS); 1♀, Yuanmingyuan, 25-IV-1980, leg. Shengqiao Jiang (IZCAS); 1♂1♀, Haidian, Beijing Botanical garden, Yingtaogou, before 2020, leg. Chen Jin from dried *Ulmus* sp. (CJC); 1♂, Haidian, Fenghuangling, host: *Sophora japonica* Linn., 116°5'43"E, 40°6'26"N, 4-V-2021, leg. Jian Sun (CSJ); 1♀, Haidian, Jiufeng, 12-VI-2006, leg. Ye Liu (CSHL); 2♀, Mentougou, Longmenjian, elev. 740 m, 15-VI-2003, leg. Dakang Zhou (CZDK); 3♀, Mentougou, Xiaolongmenlinchang, elev. 1140–1400 m, 18–25-V-2003 or 24/25-IX-2004, leg. Dakang Zhou (CZDK); 2♂2♀, Mentougou, N. Shengtaidingweizhan (Ecological Research Station), elev. 1160 m, *Juglanus mandshurica* Forest, 30-V-2-VI-2001, leg. Xiaodong Yu by pitfall trap (IZCAS); 1♂1♀, Mentougou, Xiaolongmenlinchang, Nangou, elev. 1250 m, *Quercus liaotungensis* Forest, 30-V-2-VI-2001, leg. Xiaodong Yu by pitfall trap (IZCAS); 1♂, Mentougou, Xiaolongmenlinchang, Nangou, elev. 1225 m, broad-leaf forest, 30-V-2-VI-2001, leg. Xiaodong Yu by pitfall trap (IZCAS); 1♀, Mentougou, Liyuanling, elev. 1050 m, *Quercus liaotungensis* Forest, 31-V-3-VI-2001, leg. Xiaodong Yu by pitfall trap (IZCAS); 1♀, Mentougou, Qingshuizhen, Xiaolongmenlinchang, 11-V-2012, leg. Hongbin Liang (IZCAS); 1♀, Mentougou, host: *Juglans regia* Linnaeus, 6-III-1982 (IZCAS); 1♀, Mentougou, Xiaolongmen, 115°27'40"E, 39°57'34"N, 13-VI-2021, leg. Meiyong Lin (CSJ); 2♂, Mentougou, Xiaolongmen, 26-VI-2004, leg. Hongliang Shi (CSHL); 1♀, Mentougou, Xiaolongmen, elev. 1200–1300 m, 20-VIII-2003 (CSHL); 4♂, Mentougou, Zhaojiawacun, 116°3'28.9"E, 39°55'5.11"N, 8-VII-2020 and 29-V-2021, leg. Jian Sun (CSJ); 4♂, Changping, Huaguoshancun, 27/29-IV-17-V-2020, leg. Jian Sun (CSJ); 1♂1♀, Huairou, Yunmengshan Forest Park, 19/20-VII-2003, leg. Dakang Zhou (CZDK); 1♂, Huairou, Labagoumenxiang, Huangdinazicun, 24-VII-2004, leg. Feng Yuan (CZDK); 1♂, Huairou, Labagoumenxiang, Lanianlu, Senlinfanguo Jianchazhan, 116°28'36.41"E, 40°54'29.98"N, 1-V-2021,

leg. Jian Sun (CSJ); 1♂, Huairou, Labagou, 116°29'10.01"E, 40°57'45.32"N, 11-VII-2020, leg. Jian Sun (CSJ); 1♀, Huairou, Labagoumen, 20-VII-2019, leg. Xiaoran Yang (MYNU from CYXR); 1♂2♀, Huairou, Xiangzhazicun, elev. 451 m, 116°45'13"E, 40°45'30"N, 13-14-V-2021, leg. Jian Sun (CSJ); 3♂, Huairou, Sunzhazicun, 116°30'55.04"E, 40°56'56.33"N, 11-27-VIII-2020, leg. Jian Sun (CSJ); 1♀, Huairou, Huanghuacheng, 17-IV-2020, photographed by Runzhi Zhang; 1♂, Fangshan, Puwaxiang, Dongcun, 26-VII-2020, leg. Meiyong Lin (IZCAS); 1♂, Huairou, Huanghuacheng, 25-IX-2020 (photographed by Shouqi Zhao); 2♀, Pinggu, Sizuolou Reserve, Dongding, elev. 473 m, 117.144981°E, 40.272522°N, 28-V-10-VI-2020, Xu Zhang & Chen Jin by malaise trap, 110117INSMT003 (IZCAS); 1♀, Pinggu, Sizuolou Reserve, 10-VI-2020 (IZCAS); 1♂1♀, Pinggu, Xiaomayugou, 1-V-2021, leg. Jian Sun (CSJ); 1♂1♀, Miyun, Xinchengzizhen, Potoucun, 7/8-VII-2015, leg. Meiyong Lin (IZCAS); 3♂4♀, Miyun, Xinchengzizhen, Xishihu, 4 & 17-VII-2021, leg. Meiyong Lin, Changpeng Yan & Jian Sun (IZCAS & CSJ); 2♂2♀, Miyun, Xinchengzizhen, Yinziyucun, elev. 408 m, 4-VII-2021, leg. Meiyong Lin (IZCAS); 1♂1♀, Miyun, Shichengzhen, Lishugoucun, Wuzuoloulinchang, 2-VII-2015, leg. Meiyong Lin (IZCAS); 7♂7♀, Miyun, Xinchengzizhen, Dashuwacun, elev. 659–801 m, 4-VII-2021, leg. Meiyong Lin & Changpeng Yan (IZCAS); 1♂1♀, Miyun, Xinchengzizhen, Potoulinchang, 3-VII-2021, leg. Meiyong Lin (IZCAS); 1♂, Miyun, Yunxiugu, 117°23'17.37"E, 40°37'3.86"N, 24-VI-2020, leg. Jian Sun (CSJ); 1♀, Miyun, Shatan, 17-VII-2020, leg. Jian Sun (CSJ); 3♀, Yunmengshan, 10-VII-2005, leg. Hongliang Shi (CSHL); 1♀, Miyun, Jijiayingzicun, 117°19'39.56"E, 40°36'43"N, 13-V-2021, leg. Jian Sun (CSJ); 3♂3♀, Yanqing, Jingzhuangzhen, Sanchacun, elev. 399 m, 116.129821°E, 40.332146°N, 19-VI-2021, leg. Meiyong Lin (IZCAS); 1♂, Yanqing, Yudushan, 6-VI-2020, leg. Xiaoran Yang (MYNU from CYXR); 1♂2♀, Yanqing, Songshan, elev. 800 m, 4-7-VI-2003, leg. Dakang Zhou (CZDK); 1♂, Yanqing, Songshan, Xidazhuangkexiang, Lanjiaogou, 23-V-2010, leg. Xinlei Huang (IZCAS, IOZ(E)1905523); 2♂1♀, Yanqing, Songshan, 22-VI-2015, leg. Xinlei Huang (IZCAS); 2♀, Yanqing, Songshan, elev. 674 m, 115.8258°E, 40.4856°N, 23-IV-2012, leg. Xinlei Huang (IZCAS); 1♂, Yanqing, Songshan, Longtengshan Zhuang, 21-VI-2012, leg. Xinlei Huang (IZCAS); 1♀, Yanqing, Songshan, Zhandaogonglu, 30-V-2012, leg. Dong Zhang *etc.* (IZCAS); 2♀, Yanqing, Songshan Nat. Rev., 10-14-VI-2013, leg. Jing Wang, Wei Li *etc.* (IZCAS); 1♂1♀, Yanqing, Songshan Nat. Rev., elev. 1310 m, 115.759°E, 40.525°N, 29-VI-2014, leg. Hongliang Shi (CSHL); 1♂5♀, Yanqing, Songshan Nat. Rev., Jingqu, *Pinus tabulaeformis* Forest, elev. 765–1032 m, 25-31-V-2014, leg. Fujing Zhang by pitfall trap (CSHL); 1♂, Yanqing, Songshan, Nat. Rev., Yanjiapingyakou, elev. 1394 m, 115.7459° E, 40.5331°N, 7-VII-2013, leg. Bo Liu (BJFU); 1♂, Badaling, 24-V-1973, leg. Fuji Pu (IZCAS); 1♂, Badaling, 19-IV-1973, leg. Wenzhen Ma (IZCAS); 1♀, Songshan, 12-III-1982 (IZCAS). Heilongjiang: 1♂, Mudanjiangshi, Junmachang, 26-V-2009, leg. Ye Liu (IZCAS); 1♂, Dajitishan, 15-V-2012 (MYNU); many (IZCAS) from Harbin (Wuchang, Shanhetun, Ercengdianzi, Xiaoling), Yichun (Dailing). Jilin: many (IZCAS) from Changbaishan *etc.* Liaoning: 1♂1♀, Dandong, Wulongshan, 28-VI-2013, leg. Xinlei Huang (IZCAS); 1♀, Anshanshi, Qianshan, Xianrentai, 11-VI-2008, leg. H. Yoshitake (IZCAS); 1♀, Shanyang (IZCAS); many (IZCAS) from Qingyuan, Benxi, Fengcheng. Inner Mongolia: 1♂4♀, Alashan Zuoqi, Helanshan, Xiangchizi, elev. 2283 m, 105.93111°E, 38.98092°N, 7-VIII-2010, leg. Meiyong Lin (IZCAS); 1♂, Alashan Zuoqi, Helanshan, Qianggangling, elev. 2243 m, 105.88589°E, 38.73888°N, 7-VIII-2010, leg. Meiyong Lin (IZCAS); Hebei: 3♂1♀, Eastern Tomb (IZCAS); 1♂, Shijiazhuang, VI-1987 (IZCAS); 1♀, Changli, 3-VI-1952 (IZCAS); 1♀, Xinglong, host: *Castanea mollissima* Blume, 27-V-1989 (IZCAS); 1♂, Zhuolu, Yangjiaping, Host: *Juglans regia* Linnaeus, 19-V-1930, leg. Xing XU (IZCAS). Shandong: 4♂, Shantung, Tsingtao, VIII-1937, leg. V. J. Tolmachov (IZCAS).

Specimens wrongly identified as *Mesosa stictica* Blanchard, 1871: Beijing: 1♂ (Fig. 15), Mentougou, Xiaolongmenlinchang, Nangou, 30-V-2-VI-2001, leg. Xiaodong Yu (IZCAS); 1♂1♀, Mentougou, N. Shengtaidingweizhan (Ecological Research Station), elev. 1160 m, *Juglanus mandshurica* Forest, 30-V-2-VI-2001, leg. Xiaodong Yu by pitfall trap (IZCAS); 1♂, Mentougou, N. Shengtaidingweizhan (Ecological Research Station), elev. 1190 m, *Pinus tabulaeformis* Forest, 30-V-2-VI-2001, leg. Xiaodong Yu by pitfall trap (IZCAS); 1♀, Mentougou, Xiaolongmenlinchang, 26-VII-4-VIII-2015, leg. Xinlei Huang by net (IZCAS); 1♀, Mentougou, Xiaolongmen, elev. 1164–1210 m, 115.43°E, 39.96°N, 5-VII-2011, leg. Kuiyan Zhang (IZCAS); 1♀, Mentougou, Lingshan, 28-VI-2001, leg. Hong Nie (IZCAS); 1♀, Haidian, Xishan, Wofosi, 5-X-1955, leg. Qin Zhou (IZCAS). Zhejiang: 2♂, Xitianmushan, 7-VI-2012, leg. Jianyue Qiu (MYNU).

Distribution. China (Beijing, Heilongjiang, Jilin, Liaoning, Neimenggu, Hebei, Shandong (new record), Henan, Shaanxi, Gansu, Qinghai, Xinjiang, Anhui, Zhejiang, Hubei, Guangdong, Sichuan, Guizhou), Mongolia, Russia, N. Korea, S. Korea, Japan, Kazakhstan; Northern Europe.

Remarks. According to our research on a big series of specimens from Beijing, we believe that there is only one species distributed in Beijing and the north part of China, which was identified as *M. (M.) myops* (Dalman, 1817).

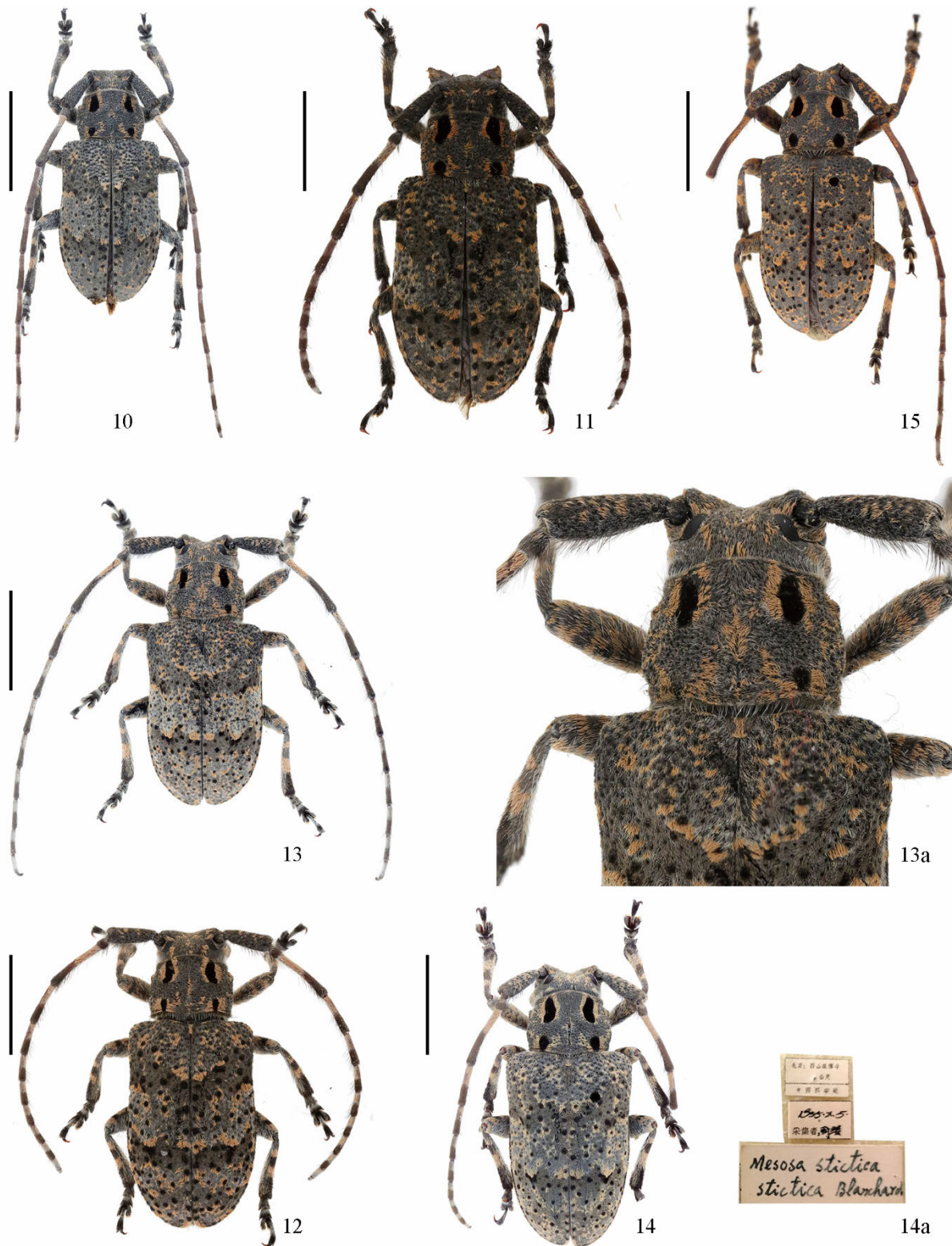
There are some specimens identical to *M. (M.) stictica* Blanchard, 1871 because of the anterior black spots on pronotum stouter and rounder, such as the Fig. 14 with a label of *Mesosa stictica stictica* Blanchard, and Fig. 15 with the pronotal spots much rounder than Fig. 12. And such identification may be correct since they are quite similar to the holotype of *M. (M.) stictica* Blanchard, 1871, which can be seen from the website <http://bezbycids.com/byciddb/wdetails.asp?id=31677&w=o>.

However, we decided to identify all of the Beijing specimens as the same species because those individuals with “rounder spots” occur together with typical *M. myops*, sometimes collected from the same tree at the same time, and there



Figures 6–9. *Mesosa (Perimesosa) hyunchaei* Yamasako & Hasegawa, 2009. 6–7. Male, from Beijing, Huairou, dorsal and lateral view. 8. Male, from Jiangsu, Jurong, Baohuashan. 9. Female, from Beijing, Mentougou. Scale bars=5.0 mm.

are transitional forms between the typical slender spots and round spots, such as in Fig. 11. It is very possible that *Mesosa stictica* Blanchard, 1871 is a variation of *M. (M.) myops* (Dalman, 1817). For further study, a review of their systematics,



Figures 10–15. *Mesosa (Mesosa) myops* (Dalman, 1817). 10. Male, from Beijing, Yanqing. 11. Female, from Beijing, Miyun. 12. Female, from Beijing, Pinggu. 13. Male, from Beijing, Pinggu, showing the absence of one black spot on pronotum (Fig. 13a). 14. Female, from Beijing, Haidian, misidentified as *M. stictica* (Fig. 14a). 15. Male, from Beijing, Mentougou, showing the most round spots on pronotum. Scale bars=5.0mm (except 13a and 14a).

based on examination of additional material including type material, should be done.

Funding This research was supported by the Biodiversity Survey and Assessment Project of Beijing, the Biodiversity Survey and Assessment Project of the Ministry of Ecology and Environment, China (2019HJ2096001006).

Acknowledgement We wish to express our thanks to Junsuke Yamasako (Institute for Agro-Environmental Sciences, NARO, Japan) for helpful discussion and improvement on this manuscript. We are grateful to Zhaonan Li (Beijing, China) for donating a female specimen of *Agelasta (Mesolophus) marmorata* (Pic, 1927) collected from Beijing to IZCAS, to Xiaoran Yang (CXZR) for donating three Mesosini specimens to Meiyang Lin, to Jianyue Qiu (MYNU) for collecting the related specimens used in this study. We wish to express our sincere thanks to Hongliang Shi (BJFU & CSHL), Dakang Zhou (CZDK), Weiwei Zhang (CZWW), Xiaoran Yang (CYXR) and Chen Jin (CJC) for giving access to their collections, and to Guoyue Yu (Beijing) and Shengping Yu (IZCAS) for providing the ecological pictures.

References

- Blanchard, C.É. 1871. Remarques sur la faune de la principauté thibétaine du Mou-pin. *Comptes Rendus de l'Académie des Sciences de Paris*, 72: 807–813.
- Breuning, S. 1939. Études sur les Lamiinae: Huitième tribu: Mesosini Thomson (Coléop. Cerambycidae). *Novitates Entomologicae, Troisième supplément*, 393–526, figs 510–521.
- Chiang, S.N., Pu, F.J., Hua, L.Z. 1985. *Coleoptera: Cerambycidae III. Economic Insect Fauna of China*. Science Press, Beijing. 189pp., 13pls.
- Dalman, J.W. 1817. [new taxa]. In: Schönherr, C.J. (eds.), *Synonymiam Insectorum*. Em. Bruzelius, Upsala. xi+506pp+Appendix 266pp.
- Danilevsky, M.L. 2010. New Acts and Comments. Cerambycidae. In: Löbl, I., Smetana, A. (eds.), *Catalogue of Palaearctic Coleoptera. Vol. 6*. Apollo Books, Stenstrup. pp. 43–49.
- Gressitt, J.L. 1942. Nouveaux longicornes de la Chine orientale. *Notes d'Entomologie Chinoise*, 9: 79–97, 2 pls.
- Gressitt, J.L. 1951. *Longicorn Beetles of China. Longicornia II, études et notes sur les longicornes, Volume 2*. Paul Lechevalier, Paris. 667pp., 22pls.
- Hua, L.Z. 2002. Cerambycidae. In: Hua, L.Z. (ed.), *List of Chinese Insects, Vol. II*. Zhongshan University Press, Guangzhou. pp. 189–237.
- Küster, H.C. 1851. *Die Käfer Europa's. Nach der Natur beschrieben. Mit Beiträgen mehrerer Entomologen. 22. Heft*. Bauer & Raspe, Nürnberg. [4] + 100 sheets, 3pls.
- Lin, M.Y. 2014. Some new localities of Chinese longhorn beetles (Coleoptera, Cerambycidae). *Les Cahiers Magellanes*, NS, 16: 110–150.
- Lin, M.Y. 2017. *Insect Fauna of the Qinling Mountains, Volume VI (Coleoptera II), Cerambycid-beetles*. World Publishing Corporation, Xi'an. 510pp, 37pls.
- Lin, M.Y., Weigel, A., Ge, S.Q. 2021. A new synonym of the species *Falsomesosella truncatipennis* Pic, 1944 (Coleoptera: Cerambycidae: Lamiinae: Mesosini). *Zoological Systematics*, 46(4): 342–343.
- Lin, M.Y., Tavakilian, G. 2019. Subfamily Lamiinae. In: Lin, M.Y., Yang, X.K. (eds.), *Catalogue of Chinese Coleoptera, Volume IX, Chrysomeloidea: Vesperidae, Disteniidae, Cerambycidae*. Science Press, Beijing. pp. 216–408.
- Löbl, I., Smetana, A. 2010. *Catalogue of Palaearctic Coleoptera. Vol. 6. Chrysomeloidea*. Apollo Books, Stenstrup. 924pp.
- Pic, M. 1927. Coléoptères de l'Indochine. *Mélanges Exotico-Entomologiques*, 49: 1–36.
- Tavakilian, G.L., Chevillotte, H. 2021. Titan: base de données internationales sur les Cerambycidae ou Longicornes. Version. Available from <http://titan.gbif.fr/index.html> (accessed 10 October 2021).
- Wang, Z.C. 2003. *Monographia of Original Colored Longicorn Beetles of China's North-east*. Jilin Science and Technology Publishing House, Changchun. 420pp.
- Yamasako, J., Hasegawa, M. 2009. A new species of *Mesosa (Perimesosa)* from South Korea and identity of *Mesosa (Saimia) amakusae* Breuning, 1964 (Coleoptera, Cerambycidae, Lamiinae) [Studies on Asian Mesosini, III]. *Special Bulletin of the Japanese Society of Coleopterology*, 7: 289–295.
- Yu, G.Y. 2020. *Photographic Atlas of Beijing Beetles*. Science Press, Beijing. 417pp.